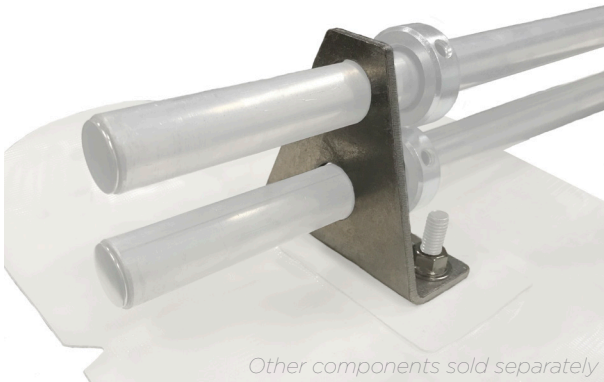


# DATA SHEET

## AP SOLUTION™ SRS 0220 | 2-PIPE SNOW FENCE



The AP Solution - SRS 0220 2-Pipe Snow Fence is a snow retention system that is attached to TPO, PVC, EPDM, or a Coated Roof using the U-Anchor 3000-S series attachment. This solution provides a stout securement and superior strength to out perform other conventional systems on the market. The SRS 0220 includes the brackets, 8' - 1" OD Pipe, end caps, end collars, and snow restrictors plus all hardware to assemble the system and attach to the U-Anchors. The system manages snow migration on the roof, allowing for the proper evacuation of snow off the roof in a controlled manner. Restrictor plates are an optional component that mount onto the top bar of the SRS 0220 and extend down closer to the roof's surface. This is designed to help mitigate slides for lower volume snow falls that would otherwise accumulate underneath the lowest pipe of the system.



Other components sold separately

Bracket

Hardware



Other components sold separately

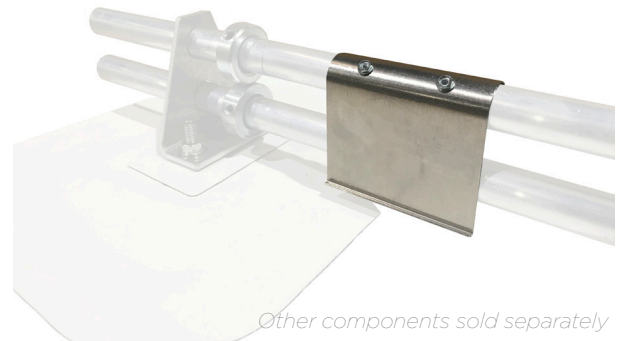
Splice

Pipe



End Cap

Pipe Collar & Set Screw



Other components sold separately

Back

Side



## Product Specs

### Bracket

- Dimensions: 4" L x 1.75" W x 4" H
- Material Type: 5052 Aluminum
- Material Thickness: 0.19"
- Quantity: 10 per box

### Hardware

#### Flanged Nut

- Dimensions: 0.74" L x 0.74" W x 0.34" H
- Threading: 3/8"-16
- Material Type: 304 Stainless Steel
- Quantity: 20 per box

#### Flat Washer

- Inner Diameter: 0.415"
- Outer Diameter: 0.875"
- Material Type: 304 Stainless Steel
- Quantity: 20 per box

#### Packaging

- Box Dimensions: 7" L x 7" W x 5" H
- Weight: Approx. 3.0 lbs

### Pipe Collar & Set Screw

#### Pipe Collar

- Dimensions: 1.75" L x 0.627" W x 1.75" H
- Inner Diameter: 1.065"
- Outer Diameter: 1.75"
- Material Type: 304 Stainless Steel
- Quantity: 4 per kit

#### Set Screw

- Set Screw Threading: 5/16"-18
- Set Screw Head: 5/32
- Material Type: 304 Stainless Steel
- Quantity: 4 per kit

#### Pipe End Cap

- Dimensions: 0.92" L x 0.295" W x 0.92" H
- Outer Diameter: 0.92"
- Material Type: 304 Stainless Steel
- Quantity: 4 per kit

#### Packaging

- Box Dimensions: 7" L x 7" W x 5" H
- Weight: Approx. 1.1 lbs

### Restrictor Plate

- Dimensions: 4" L x 3.5" W x 1.125" H
- Material Type: 5052 Aluminum
- Material Thickness: 0.04"
- Box Quantity: 10 per box

### Hardware

- Self-Tapping Fastener
- Fastener Head: 5/16" Hex
- Material Type: Zinc-Plated Steel
- Box Quantity: 20 per box

#### Packaging

- Box Dimensions: 6" L x 4" W x 4" H
- Weight: Approx. 1.2 lbs

### 8' - 1" OD Pipe

- Dimensions: 96" L x 1" W x 1" H
- Inner Diameter: 0.75"
- Outer Diameter: 1"
- Material Type: 6061 Aluminum

### Pipe Splice

- Dimensions: 6" L x 0.75" W x 0.75" H
- Inner Diameter: 0.5"
- Outer Diameter: 0.75"
- Material Type: 6061 Aluminum

### Packaging

- Box Dimensions: 96" L x 2" W x 1" H
- Weight: Approx. 7.25 lbs
- Master Carton
- Quantity: 10
- Carton Dimensions: 96" L x 7" W x 7" H
- Weight: Approx. 66 lbs
- Pallet
- Quantity: 600 / pallet
- Pallet Dimensions: 102" L x 40" W x 40" H
- Weight: Approx. 4420 lbs

## Advantages

- Thicker material and a lower profile provide superior strength
- Attached with Anchor Products U3400-S offering industry leading holding strength
- Quick and easy installation
- Waterproof without sealants, caulking, field fabricated flashings, or compression seals
- Superior splice strength that still accommodates thermal expansion needs
- Material compatible and will not corrode
- Low profile design increases strength of overall system
- Custom color powder coating available\*

## System Design

The AP Solution – SRS 0220 2-Pipe Snow Fence is designed and calculated based on site specific requirements. Contact your rep to understand how each system is calculated and designed.

## Testing Data

Contact Anchor Products for testing data on the U-Anchor U3400-S and other U-Anchors.

## Patents

Visit [www.anchorp.com/patents](http://www.anchorp.com/patents)

\* Specified option is standard. Custom options may be available for additional charge. Lead times may apply depending on roofing manufacturer and product availability.