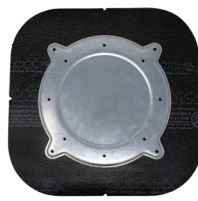
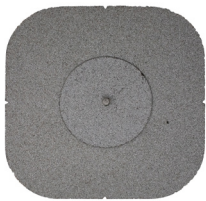


Front

Back



Product Specs

Bolt

- 3/8"-16 x 1.5" Attachment Bolt*
- Material Type: 304 Stainless Steel

Plate

- Outer Diameter: 14.267"
- Inner Fastener Hole Pattern: 9.185" (8 holes)
- Outer Fastener Hole Pattern: 13" (4 holes)
- Material Thickness: 0.118"
- Material Type: Galvalume® AZ55
- Cover Membrane
- Manufacturer: Brand Specific OR Generic
- Color: Default White*
- Length: 17.5"
- Width: 17.5"
- Thickness: Approx. 130 mils*

Patents

- Visit www.anchorcorp.com/patents

Packaging Specs

- Sold Individually OR Full Box Quantity
- Individual Weight: Approx. 4.2 lbs
- Full Box Quantity: 4 units
- Box Weight: Approx. 17 lbs
- Box Dimensions: 18" x 18" x 5"
- Full Pallet Quantity: 30 boxes
- Pallet Dimensions: 48" x 40" x 48"

* Specified option is standard. Custom options may be available for additional charge. Lead times may apply depending on roofing manufacturer and product availability.

Description

The U4600-APP is a lightweight rooftop attachment system consisting of a U-Anchor 4000 Series plate and cover membrane. The U4600-APP includes a factory prepared SBS cover membrane and separator disk. The U4600-APP provides a positive, watertight, manufacturer accepted attachment for torch applied roofing systems.

Advantages

- Extremely strong and lightweight
- Rapid installation.

U-Anchor Attachment

The U4600-APP is attached by fastening through the roofing assembly into the structural decking with 2-12 approved fasteners. Depending on the roofing manufacturer's requirements, 1 or 2 plies of membrane may be required. The membrane is then torched down per the roofing manufacturer's specified methods.

Fastener selection is dictated by the system assembly, deck type, and the project engineer.

Refer to installation instructions and the specified roofing material manufacturer requirements before installing.

Equipment Attachment

To securely mount your rooftop equipment to the U-Anchor, after its installed, the connection nut must be fastened to approximately 20-25 torque pounds.

Use a calibrated torque wrench during install to ensure appropriate results are achieved.

Testing / Approvals

- Accepted - All Major Roofing Manufacturers

Individual deck assembly reports available upon request.

Ratings

Results are base on plate performance only.

- Ultimate Load - Shear: 10,000 lbs
- Ultimate Load - Tension: 10,000 lbs

*Test was performed in accordance with:
ICC-ES AC467 Section 3.2*

Warranty

- Standard 20 Year Material Only Warranty

