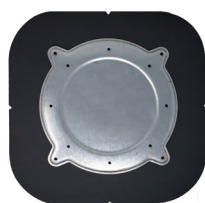




Front

Back



Product Specs

Bolt

- 3/8"-16 x 1.5" Attachment Bolt*
- Material Type: 305 Stainless Steel

Plate

- Outer Diameter: 14.267"
- Inner Fastener Hole Pattern: 9.185" (8 holes)
- Outer Fastener Hole Pattern: 13" (4 holes)
- Material Thickness: 0.118"
- Material Type: Galvalume® AZ55
- Cover Membrane
- Manufacturer: Brand Specific OR Generic
- Color: Default White*
- Length: 17.5"
- Width: 17.5"
- Thickness: Default 60 mil*

Patents

- Visit www.anchorcorp.com/patents

Packaging Specs

- Sold Individually OR Full Box Quantity
- Individual Weight: Approx. 4 lbs
- Full Box Quantity: 4 units
- Box Weight: Approx. 16 lbs
- Box Dimensions: 18" x 18" x 5"
- Full Pallet Quantity: 30 boxes
- Pallet Dimensions: 48" x 40" x 48"

Description

The U4400-KEE is a lightweight rooftop attachment system consisting of a U-Anchor 4000 Series plate and cover membrane. The cover membrane is factory sealed to the top of the plate. The U4400-KEE provides a positive, watertight, manufacturer accepted attachment for mechanically attached and fully adhered KEE single-ply membranes.

Advantages

- Extremely strong and lightweight
- Rapid installation

U-Anchor Attachment

The U4400-KEE is attached by fastening through the roofing assembly into the structural decking with 2-12 approved fasteners. The membrane cover is then hot air welded around the perimeter to the roof membrane.

Fastener selection is dictated by the system assembly, deck type, and the project engineer.

Refer to installation instructions and the specified roofing material manufacturer requirements before installing.

Equipment Attachment

To securely mount your rooftop equipment to the U-Anchor, after its installed, the connection nut must be fastened to approximately 20-25 torque pounds.

Use a calibrated torque wrench during install to ensure appropriate results are achieved.

Testing / Approvals

- Accepted - All Major Roofing Manufacturers

Individual deck assembly reports available upon request.

Ratings

Results are base on plate performance only.

- Ultimate Load - Shear: 10,000 lbs
- Ultimate Load - Tension: 10,000 lbs

*Test was performed in accordance with:
ICC-ES AC467 Section 3.2*

Warranty

- Standard 20 Year Material Only Warranty

* Specified option is standard. Custom options may be available for additional charge. Lead times may apply depending on roofing manufacturer and product availability.