



ANCHOR PRODUCTS™
PO Box 1551
Colleyville, TX 76034
www.anchorcorp.com
(888) 575-2131

Title:

**U-Anchor U2400,
Mechanically Attached,
Single-Ply Flashing
(PVC/TPO/KEE/TPA)**

DRAWN BY: ANCHOR PRODUCTS TECHNICAL SUPPORT

REQUEST DATE:

CATEGORY:

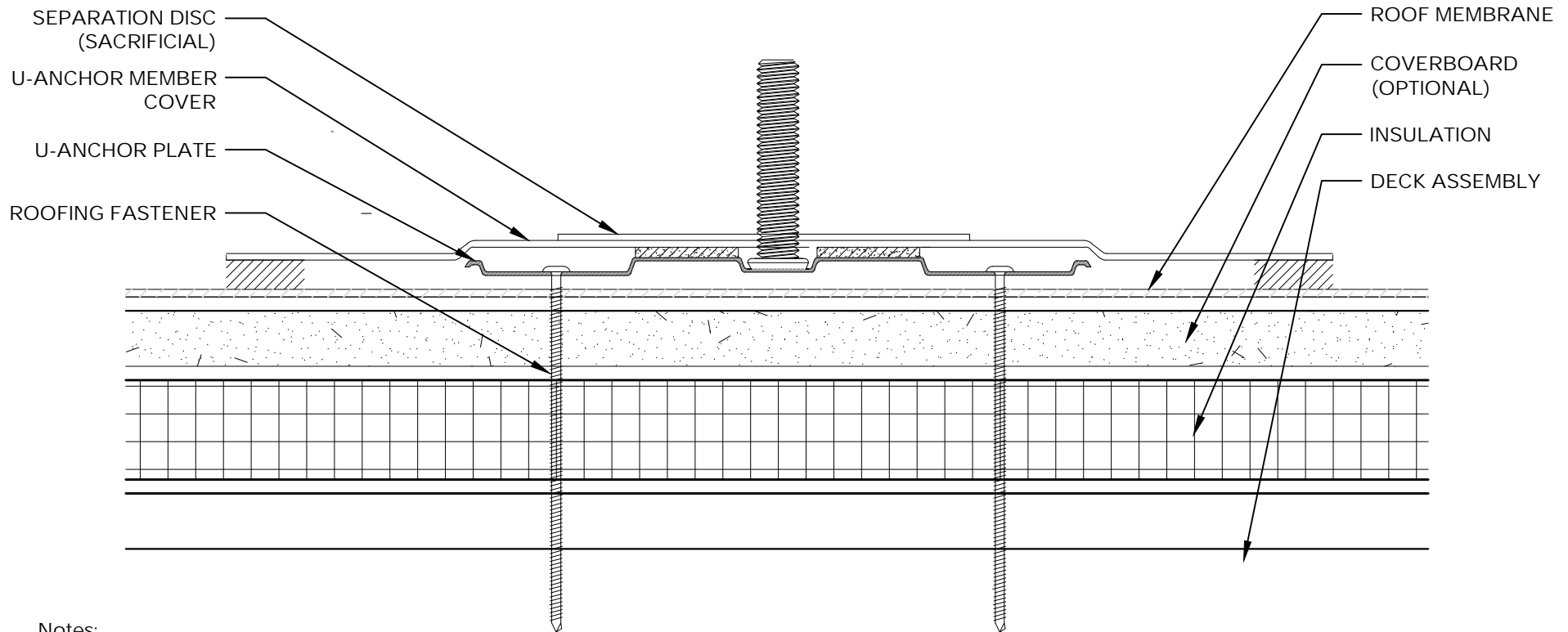
Single-Ply MA

REVISION DATE: 03/01/19

DRAWING NO.:

AP.2400.SP.MA.01a

SCALE: NTS



Notes:

1. ANCHOR PRODUCTS DETAIL DRAWINGS: REFER TO THE ROOFING AND FASTENER MANUFACTURERS AND OTHER RELATED PUBLISHED DOCUMENTATION, PRODUCT DATA SHEETS (PDS) AND SAFETY DATA SHEETS (SDS) FOR ADDITIONAL INFORMATION. ALL DETAIL DRAWINGS AND RELATED INSTALLATION GUIDELINES ARE PROVIDED BY ANCHOR PRODUCTS FOR THE SOLE PURPOSE OF CONVEYING ASSEMBLY STRUCTURE. ACCORDINGLY, THE DETAIL DRAWINGS ARE NOT OFFERED, AND SHOULD NOT BE CONSIDERED, AS A SUBSTITUTE FOR PROFESSIONAL DESIGN SERVICES.
2. TO ENSURE WARRANTIES CAN BE MAINTAINED, MOST ROOFING MANUFACTURERS REQUIRE THE FLASHING BE MADE OF THE SAME TYPE AND BRAND. MOST ROOFING MANUFACTURERS REQUIRE THAT THE INSTALLATION OF THE U-ANCHOR BE PERFORMED BY AN AUTHORIZED CONTRACTOR.
3. FASTENERS MUST BE INSTALLED PER THE FASTENER MANUFACTURER'S REQUIREMENTS FOR EACH SPECIFIC DECK TYPE FOR POSITIONING, DECK PENETRATION DEPTH, AND OTHER NECESSARY STANDARDS.
4. SEAM WELDS MUST COMPLY WITH THE ROOFING MANUFACTURER'S REQUIREMENTS. THE AREA SHOULD BE CLEANED AND FREE OF DEBRIS AS PER THE ROOFING MANUFACTURERS SPECIFICATION. TYPICAL SEAM WELDS ARE A MINIMUM 1.5". SEAMS MUST BE PROBED TO ENSURE A SUFFICIENT WELD HAS BEEN ACHIEVED. USE CUT EDGE SEALANT AS MANDATED BY THE ROOFING MANUFACTURER.
- 5.