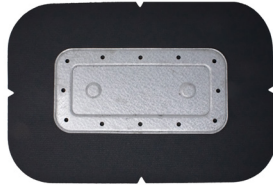


Front

Back



## Description

The U3400-TPO is a lightweight rooftop attachment system consisting of an U-Anchor 3000 Series plate, flashing cover and separator membrane. The cover and separator membrane are factory sealed to the top of the plate. The U3400-TPO provides a fastened, watertight, warranted attachment for TPO fully adhered single-ply membranes.

## Advantages

- Extremely strong and lightweight.
- Fast installation, approximate rate of 12 per man hour.
- Installs on any surface from flat to vertical.

## U-Anchor Attachment

The U3400-TPO is attached by lifting the flashing to expose the fastening holes on the plate. Then, fastening through the roofing assembly and into the structural decking with 2-12 approved fasteners, as directed by project specific engineering. The membrane cover is then hot air welded around the perimeter to the roof membrane. After verifying the seam integrity with a probe, seam sealer maybe required per roofing manufacturer's specifications.

Project-specific data is required to determine the correct type of fastener and number needed to secure each U-Anchor. An ANSI/SPRI FX-1 Pull Test is recommended to measure the pull-out resistance of fasteners included in the load path, (for example, substrate -> fasteners -> the U-Anchor -> other components.)

## Equipment Attachment

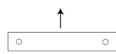

To securely mount your rooftop equipment to the U-Anchor, after its installed, the connection nut must be tightened to approximately 20-25 ft.-lbs.

Use a calibrated torque wrench during install to ensure appropriate results are achieved.

Refer to product documentation for detailed installation and component requirements.

## Testing

Results are based on plate performance only.

- Ultimate Load - Shear **X**: 9,597 lbs 
- Ultimate Load - Shear **Y**: 9,638 lbs 
- Ultimate Load - Tension: 4,997 lbs

Tested in accordance with ICC AC467

*Individual roof deck assembly tests available upon request as application specific results may vary.*

## Warranty

- 20 Year Limited Material Only Warranty.  
*Subject to terms and conditions.*

## Product Specifications

### Bolts

- 3/8"-16 x 1.5" Bolt\*
- Material Type: 304 Stainless Steel

### Plate

- Dimensions: 11.08" x 5.47"
- Fastener Hole Diameter: 0.265" (12 holes)
- Steel Thickness: 0.047" (1.194mm)
- Material Type: Galvanized Steel G90

### Cover Membrane

- Manufacturer: Brand or Non-Brand Specific\*
- Color: Default White\*
- Length: 17.5"
- Width: 11.75"
- Thickness: Default 60 mil\*

### Patents

- Visit [www.anchorp.com/patents](http://www.anchorp.com/patents)

## Packaging Specifications

- Sold Individually OR Full Box Quantity
- Individual Weight: Approx. 1.4 lb
- Full Box Quantity: 10 units
- Box Weight: Approx. 18 lbs
- Box Dimensions: 19" x 14" x 14"
- Full Pallet Quantity: 24 boxes
- Pallet Dimensions: 48" x 40" x 62"

\* Specified option is standard. Custom options may be available for additional charge. Lead times may apply depending on roofing manufacturer and product availability.

All representations herein are premised on proper installation and use of approved components. Failure to properly install or use of unapproved components voids all Anchor Products representations.

Anchor Products systems are included in many roofing manufacturers' guarantees! Please contact us for more information.

