

U-Anchor 2000 EPDM w/ Membrane Attachment Ring

Installation Instructions:

**These instructions are for EPDM ballasted, mechanically attached, or fully adhered roof systems.*

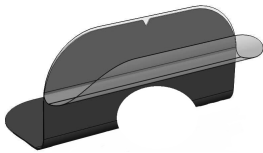
**The U-Anchor 2000 EPDM is made with TPO membrane.*

Before You Start:

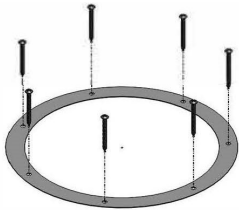
Inspect the existing roof with a qualified professional to ensure that it is in good condition and meets local codes and manufacturer's warranty requirements.

Layout:

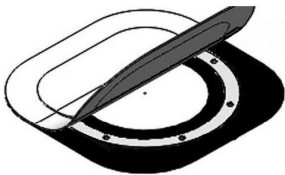
Appropriate frequency and spacing of the attachment points should be determined by a qualified professional for seismic requirements, compressive strength of the roofing assembly, structural load capacity, and local building code requirements. Convey the designed layout onto the roof surface, creating crosshatches. Pair the alignment marks on each side of the U-Anchor with the crosshatches previously prepared on the roof surface. Clean the surface where U-Anchor 2000 will be adhered to the roof with a manufacturer approved cleaner.



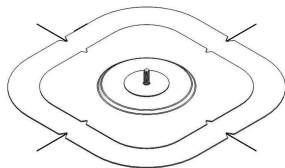
Step 1: Once properly aligned, install the double sided adhesive tape to the roof surface.



Step 2: Remove the release paper and install the attachment ring to the roof surface with approved fasteners.



Step 3: Install the U-Anchor over the ring, then roll the anchor in place in accordance with the roof manufacturer's instructions.



(Prior to adhering the Anchor mount into place, be sure the placement is accurate)

Install ancillary components using a stainless steel 3/8"-16 nut and lock washer. The recommended torque for the U-Anchor 2000 is 20\25 ft lbs.

